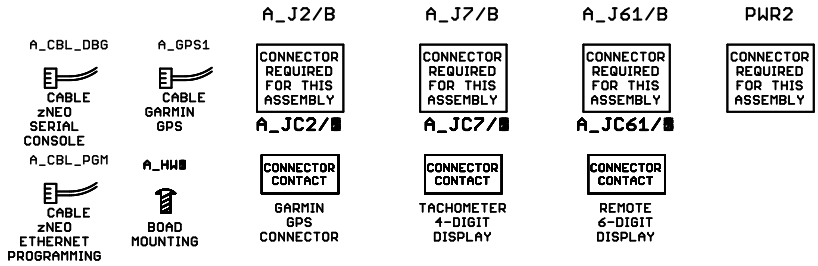


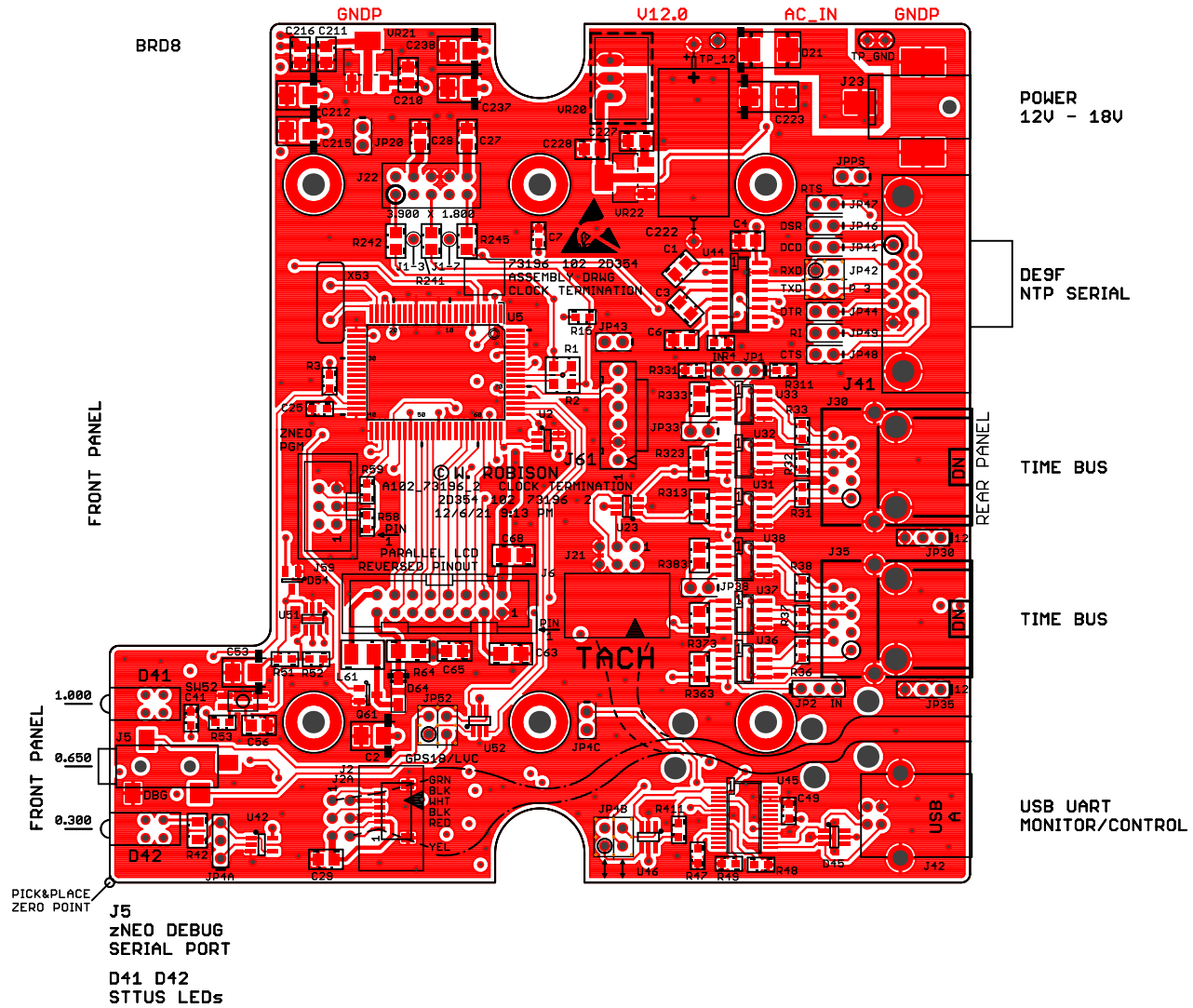
# PWA RELEASED AS 102-73196-2

ASSEMBLE PER BOM 102\_73196\_2.DigiKey.csv  
 PICK & PLACE FILE 102\_73196\_2.pck\_plc.txt  
 REFERENCE VIEW, TOP 102\_73196\_2\_top.pdf  
 REF. VIEW, BOTTOM 102\_73196\_2\_bot.pdf

PADS ARE TYPICALLY OPTIMIZED FOR HAND SOLDERING. THERE WILL BE ADDITIONAL COPPER EXTENDING BEYOND THE END OF THE DEVICE. THIS ADDITIONAL PAD AREA PROVIDES CONTACT AREA FOR THE SOLDERING IRON TIP



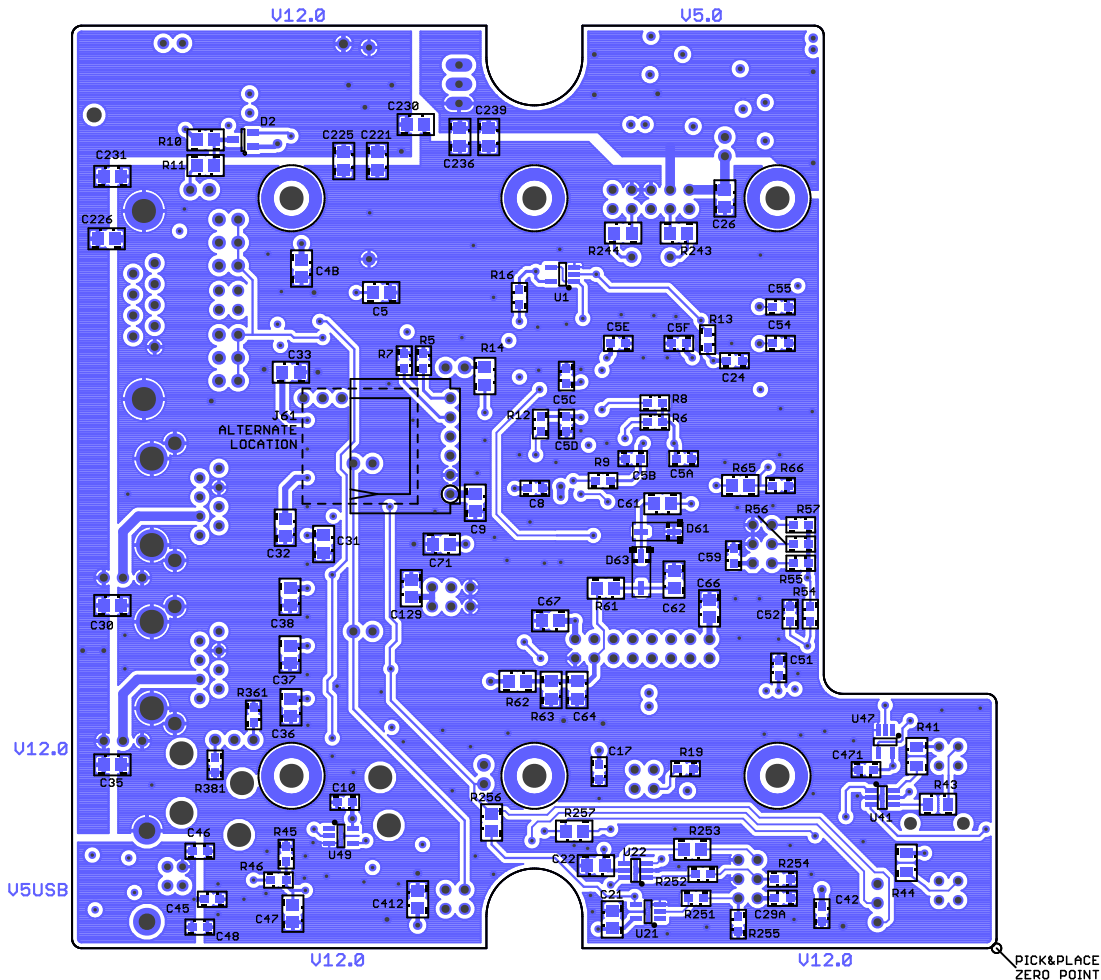
**ENCL1**  
 Mfg: HAMMOND  
 Len: 5.29  
 Wid: 5.32  
 Hgt: 2.008  
**ENCLOSURE**



TOP MARKING INK 102\_73196\_2.gto .GTO  
 TOP COPPER 10Z 102\_73196\_2.gm01 .GTL

PICK&PLACE ZERO POINT  
**J5**  
 zNEO DEBUG SERIAL PORT  
**D41 D42**  
 STTUS LEDs

Drawn	W. ROBISON	Date	TITLE: CLOCK TERMINATION PWA			
Designed	W. ROBISON	Date	The University of Iowa Department of Physics & Astronomy Iowa City, IA, USA A102_73196_2			
Approval 1		Date	Plot: 12/6/21 9:13 PM	Save: 12/6/21 9:12 PM		
			CAGE	Series	ICARC RADIO SUPPORT	LAYERS
			2D354	102		4
			Number		REV:	
			73196		2	



BOT MARKING INK 102\_33196\_2.dpo  
 BOT COPPER 102 102\_33196\_2.dmr

<b>TITLE: CLOCK TERMINATION</b> <b>PWA</b>		The University of Iowa Department of Physics & Astronomy Iowa City, IA, USA A102_73196_2	
<b>Date: 12/6/21 9:12 PM</b>			
<b>CAGE</b> 2D354	<b>Series</b> 102	ICARC RADIO SUPPORT	<b>Number</b> 73196
<b>LAYERS</b> 4	<b>REV:</b> 2		