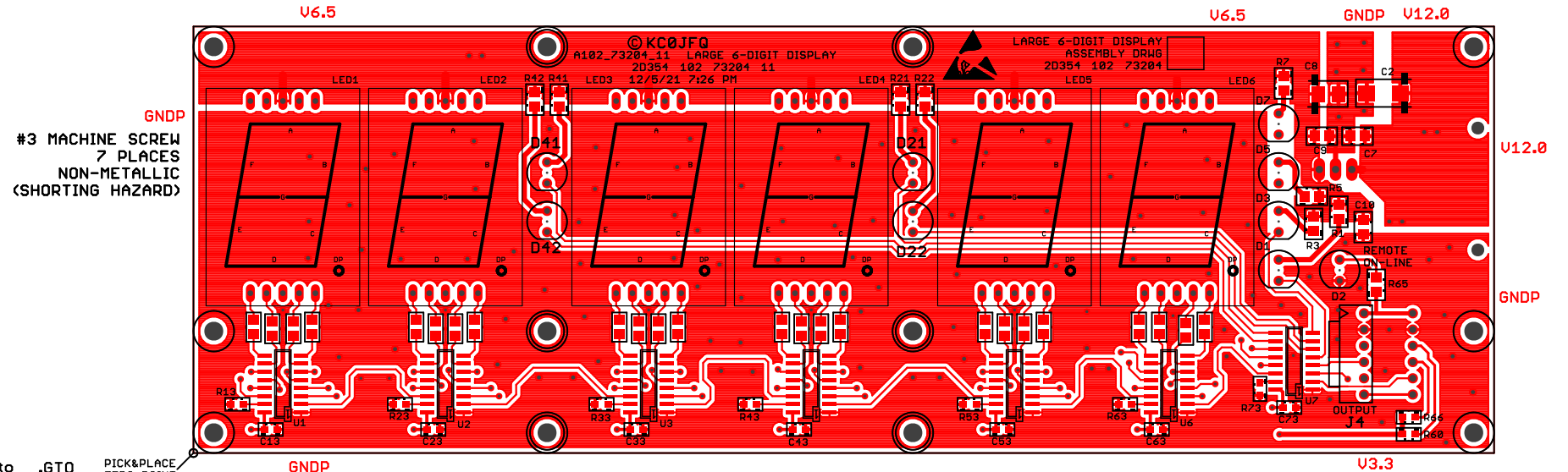


# PWA RELEASED AS 102-73204-11

ASSEMBLE PER BOM 102\_73204\_11DigiKey.csv  
 PICK & PLACE FILE 102\_73204\_11pck\_plc.txt  
 REFERENCE VIEW, TOP 102\_73204\_11top.pdf  
 REF. VIEW, BOTTOM 102\_73204\_11bot.pdf

PADS ARE TYPICALLY OPTIMIZED FOR HAND SOLDERING. THERE WILL BE ADDITIONAL COPPER EXTENDING BEYOND THE END OF THE DEVICE. THIS ADDITIONAL PAD AREA PROVIDES CONTACT AREA FOR THE SOLDERING IRON TIP

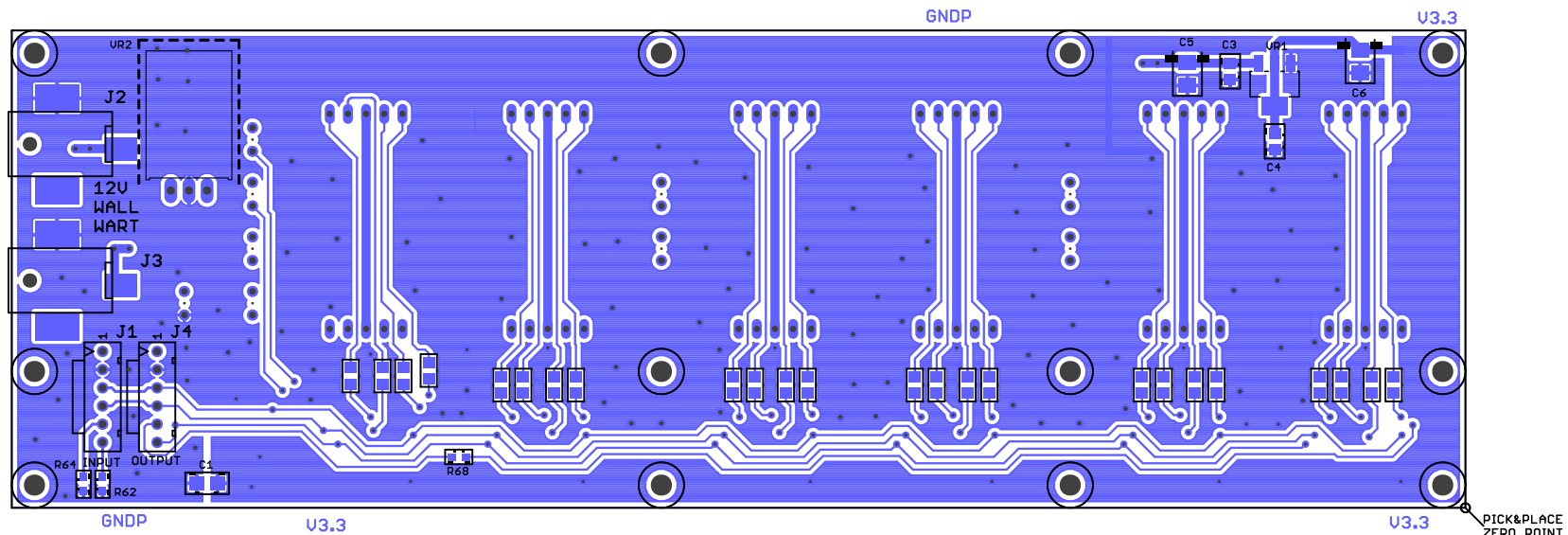
PWR2	A_J4/B	A_J1/B
CONNECTOR REQUIRED FOR THIS ASSEMBLY	CONNECTOR REQUIRED FOR THIS ASSEMBLY	CONNECTOR REQUIRED FOR THIS ASSEMBLY
12V WALL WART	A_JC4/■	A_JC1/■
	CONNECTOR CONTACT	CONNECTOR CONTACT
	CABLE TO NEXT DISPLAY	CABLE FROM HOST



TOP MARKING INK 102\_73204\_11 .gto .GTO PICK&PLACE ZERO POINT  
 TOP COPPER 102 102\_73204\_11 .gm01 .GTL

**MOUNTING HARDWARE**  
 McMASTER  
 SPACER 3/16 O.D. 94639A705  
 WASHER 0.112 x 0.206 90295A340  
 MACHINE SCREW 4-40 0.219 McMASTER  
 SMALL DIAMETER HARDWARE

Drawn	KC0JFQ	Date	TITLE: LARGE 6-DIGIT DISPLAY				The University of Iowa Department of Physics & Astronomy Iowa City, IA, USA	
Designed	KC0JFQ	Date	PWA		Plot: 12/5/21 7:26 PM		Save: 12/5/21 7:26 PM	A102_73204_11
Approval 1		Date	CAGE	Series	TIME DISPLAY	LAYERS	Number	REV:
			2D354	102		2	73204	11



BOT COPPER 102 185\_73204\_11.dmp GB1  
 BOT MARKING INK 185\_73204\_11.dpo GB0

<b>TITLE: LARGE 6-DIGIT DISPLAY</b> PWA Date: 12/5/21 7:26 PM CAGE 2D354 Series 102 TIME DISPLAY LAYERS 2 Number 73204 REU: 11		The University of Iowa Department of Physics & Astronomy Iowa City, IA, USA A102_73204_11
---	--	--