

PWA RELEASED AS 102-73204-1

ASSEMBLE PER BOM 102_73204_1.DigiKey.csv
 PICK & PLACE FILE 102_73204_1.pck_plc.txt
 REFERENCE VIEW, TOP 102_73204_1_top.pdf
 REF. VIEW, BOTTOM 102_73204_1_bot.pdf

PADS ARE TYPICALLY OPTIMIZED FOR HAND
 SOLDERING. THERE WILL BE ADDITIONAL
 COPPER EXTENDING BEYOND THE END OF
 THE DEVICE. THIS ADDITIONAL PAD AREA
 PROVIDES CONTACT AREA FOR THE
 SOLDERING IRON TIP

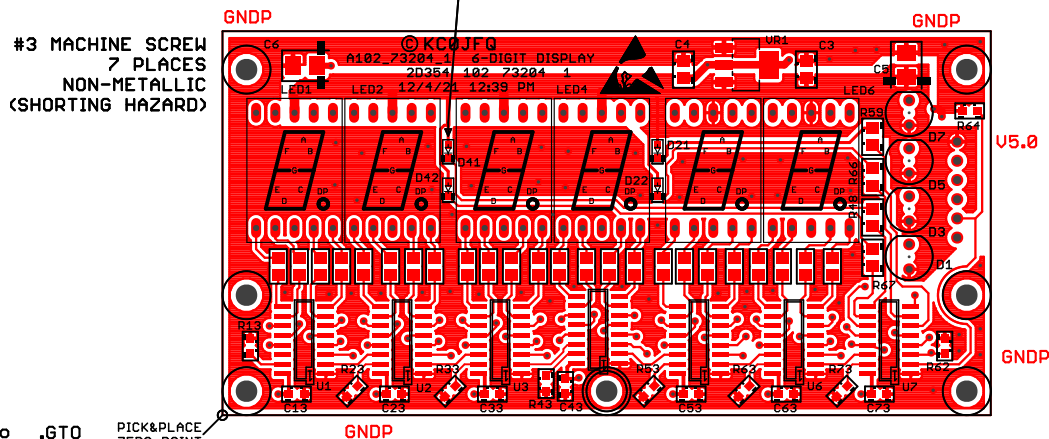
A_J1/B

CONNECTOR
 REQUIRED
 FOR THIS
 ASSEMBLY

A_JC1/B

CONNECTOR
 CONTACT

INSTALL ORDER
 INSTALL LED1/LED2
 FOLLOWED BY D41/D42
 FOLLOWED BY LED3/LED4
 FOLLOWED BY D21/D22
 FOLLOWED BY LED5/LED6



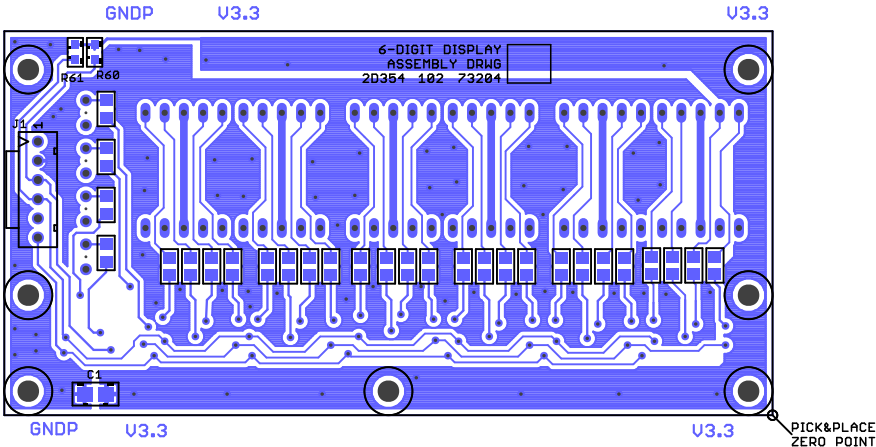
TOP MARKING INK 102_73204_1 .gto .GTO

TOP COPPER 102 102_73204_1 .gm01 .GTL

MOUNTING HARDWARE
 McMASTER
 SPACER 3/16 O.D. 94639A705
 WASHER 0.112 x 0.206 90295A340
 MACHINE SCREW 4-40 0.219 McMASTER
 SMALL DIAMETER HARDWARE

Drawn	KC0JFQ	Date	TITLE: 6-DIGIT DISPLAY				The University of Iowa	
Designed	KC0JFQ	Date	PWA				Department of Physics & Astronomy	
Approval 1		Date	Plot: 12/4/21 12:39 PM Save: not saved!				Iowa City, IA, USA	
			CAGE	Series	TIME DISPLAY	LAYERS	Number	REV:
			2D354	102		2	73204	1

A102_73204_1



J80. 2imp. 1_40325_1 102 COPPER 102
 080. 080. 1_40325_1 102 MARKING INK

TITLE: 6-DIGIT DISPLAY		The University of Iowa	
PWA		Department of Physics & Astronomy	
Date: not saved!		Iowa City, IA, USA	
		A102_73204_1	
CAGE	Series	TIME DISPLAY	LAYERS
2D354	102		2
		Number	REV:
		73204	1