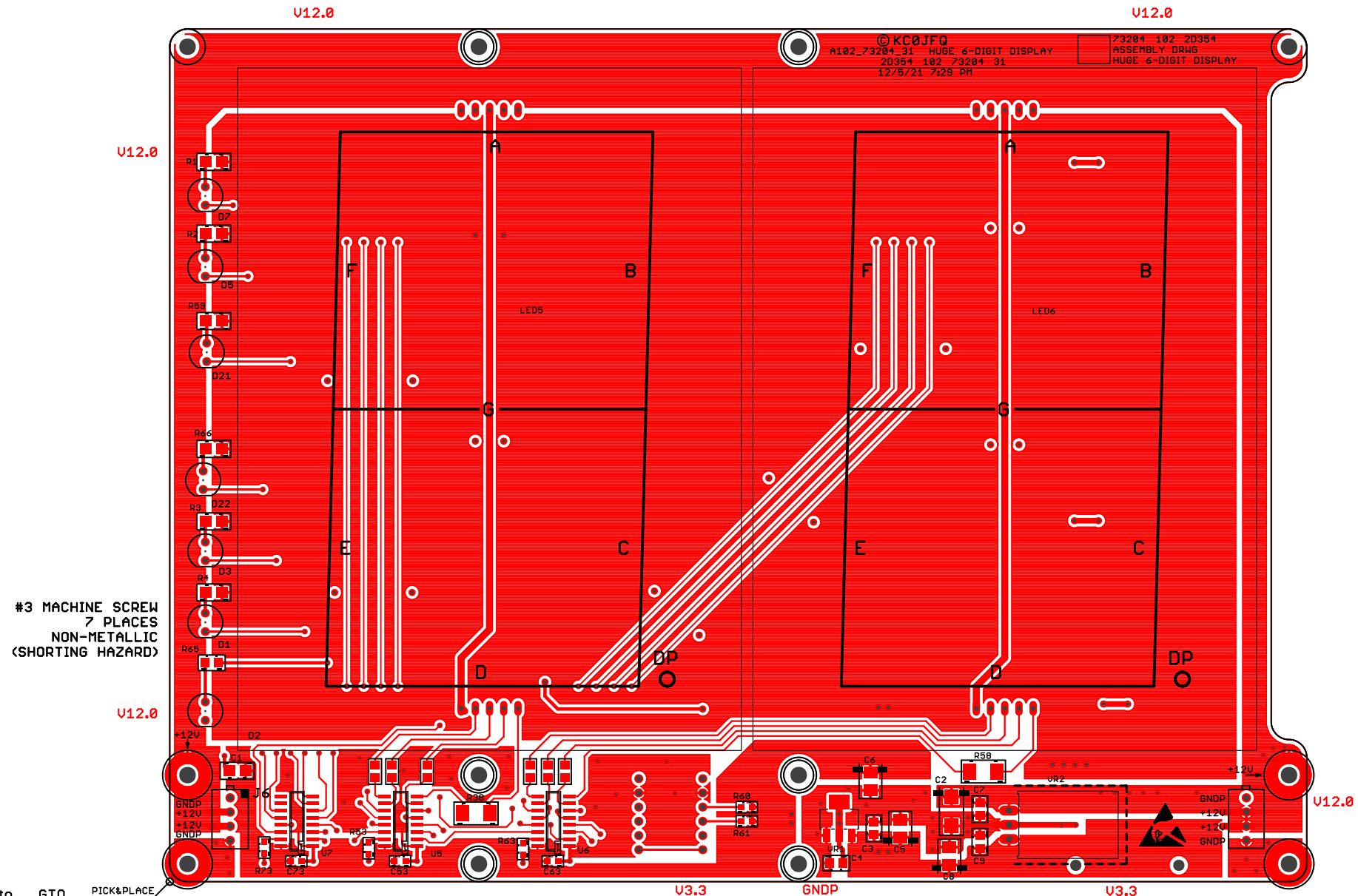


PWA RELEASED AS 102-73204-31

ASSEMBLE PER BOM 102_73204_31DigiKey.csv
 PICK & PLACE FILE 102_73204_31pck_plc.txt
 REFERENCE VIEW, TOP 102_73204_31top.pdf
 REF. VIEW, BOTTOM 102_73204_31bot.pdf

PADS ARE TYPICALLY OPTIMIZED FOR HAND SOLDERING. THERE WILL BE ADDITIONAL COPPER EXTENDING BEYOND THE END OF THE DEVICE. THIS ADDITIONAL PAD AREA PROVIDES CONTACT AREA FOR THE SOLDERING IRON TIP



#3 MACHINE SCREW
7 PLACES
NON-METALLIC
(SHORTING HAZARD)

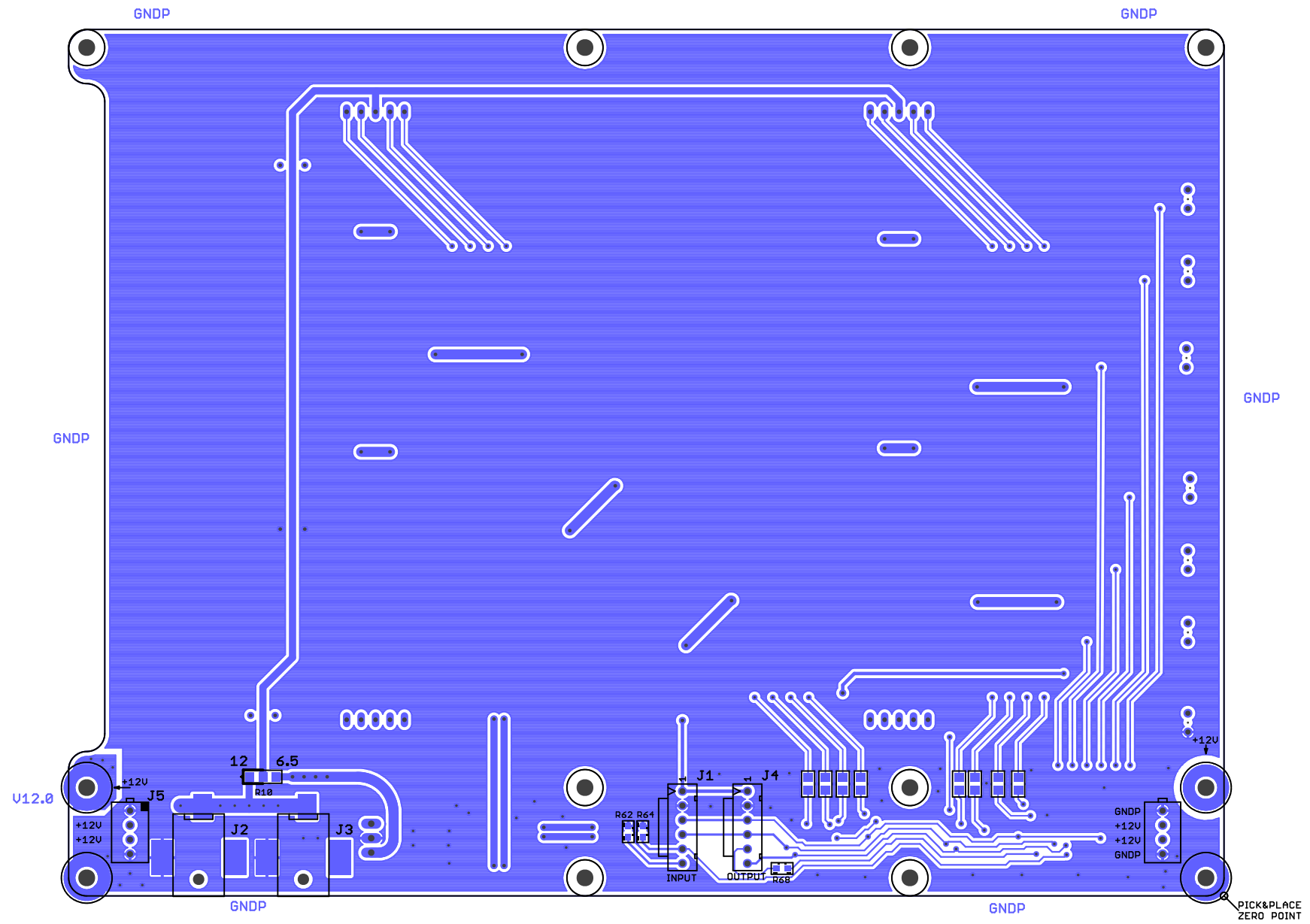
TOP MARKING INK 102_73204_31.gto .GTO

TOP COPPER 10Z 102_73204_31.gm01 .GTL

MOUNTING HARDWARE
 McMaster
 SPACER 3/16 O.D. 94639A705
 WASHER 0.112 x 0.206 90295A340
 MACHINE SCREW 4-40 0.219 McMaster
 SMALL DIAMETER HARDWARE

Drawn	KC0JFQ	Date	TITLE: HUGO 6-DIGIT DISPLAY					
Designed	KC0JFQ	Date	PWA					
Approval 1		Date	Plot: 12/5/21 7:29 PM	Save: 12/5/21 7:29 PM				
			CAGE	Series	TIME DISPLAY	LAYERS	Number	REV:
			2D354	102		2	73204	31

The University of Iowa
 Department of Physics & Astronomy
 Iowa City, IA, USA
 A102_73204_31



TOP COPPER 102 102_73204_31.dwg
 BOT MARKING INK 102_73204_31.dwg

TITLE: HUGE 6-DIGIT DISPLAY PWA Date: 12/5/21 7:29 PM The University of Iowa Department of Physics & Astronomy Iowa City, IA, USA A102_73204_31					
CAGE	Series	TIME DISPLAY	LAYERS	Number	REV:
2D354	102		2	73204	31