

TACHOMETER TEMINATION BOARD

INSTALL 6 #10X0.250 BRASS MACHINE SCREWS, THREADS UP
 SOLDER HEADS TO BOTTOM SIDE OF CIRCUIT BOARD
 McMASTER SCREW: 92446A825 NUT: 92092A025

INSTALL SURFACE MOUNT COMPONENTS

INSTALL THRU-HOLE COMPONENTS (CONNECTORS)

DETERMINE JP1 SETTING AND INSTALL JUMPER WIRE
 TACH COMES DIRECT OR THROUGH LIMITER

SELECT DESIRED ANALOG CHANNEL
 NO ACTION REQUIRED FOR WATER TEMP
 OTHER CHANNELS, CUT JPH20 TRACE
 AND INSTALL JPOIL OR JPTRIM

INSTALL JPCAL IS BENCH CALIBRATION IS
 TO BE PERFORMED USING THIS BOARD

INSTALL 6 WIRES FROM MOTOR HARNESS USING #10 BRASS NYLOCK NUTS

ASSEMBLE TACHOMETER HARNESS FROM ETHERENT PATCH CORD (STRANDED WIRE)

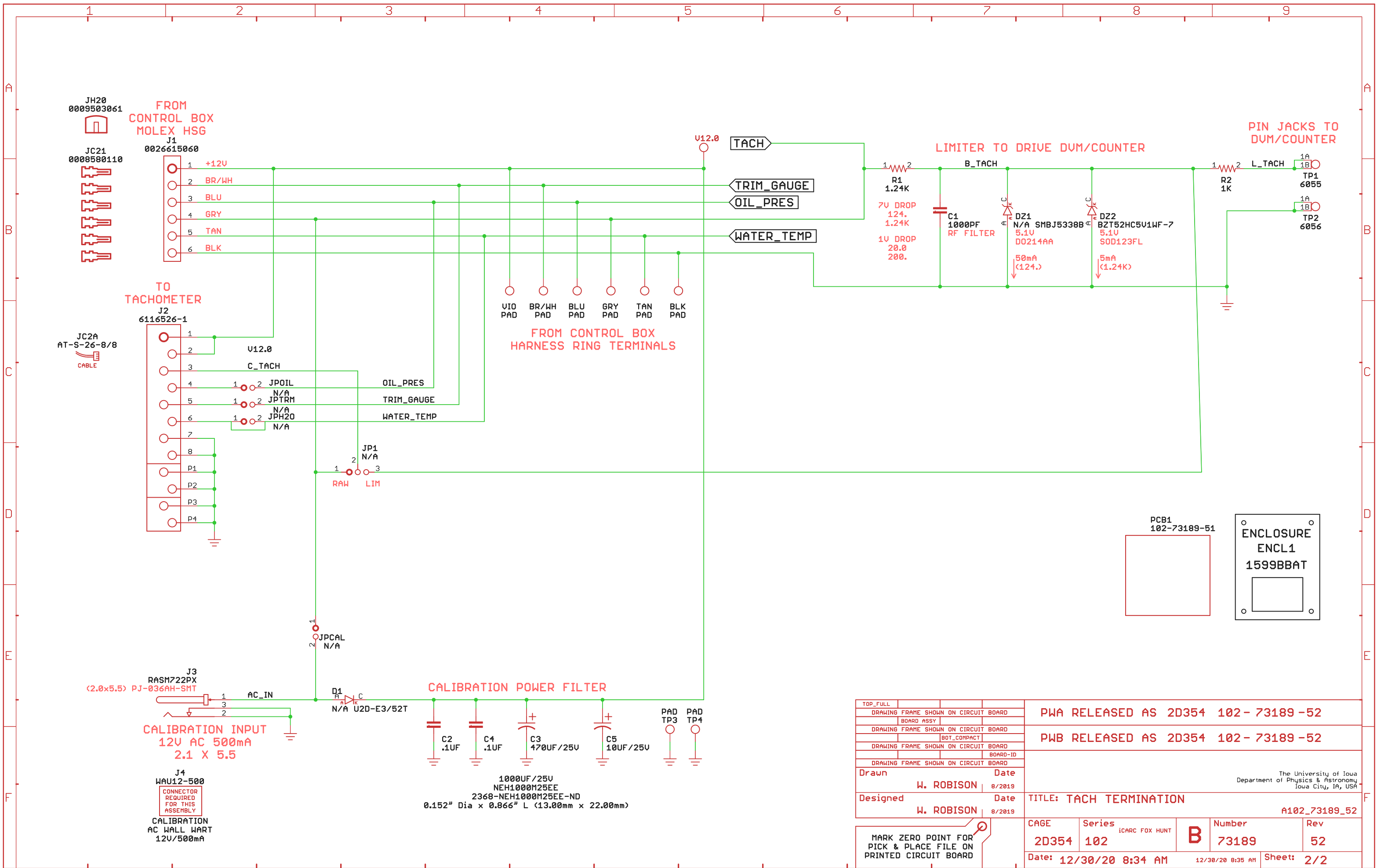
MISC PARTS

MCMASTER 10-32 BRASS SPACER 0.250 OD

92474A112 3/16"
 92474A113 1/4"
 92474A114 5/16"
 92474A115 3/8"

Drawn	Date
W. ROBISON	8/2019
Designed	Date
W. ROBISON	8/2019

The University of Iowa Department of Physics & Astronomy Iowa City, IA, USA			
TITLE: TACH TERMINATION		A102_73189_52	
CAGE	Series	Number	Rev
2D354	102 iCARC FOX HUNT	B 73189	52
Date: 12/30/20 8:34 AM		12/30/20 8:35 AM	Sheet: 1/2



TOP_FULL					
DRAWING FRAME SHOWN ON CIRCUIT BOARD					PWA RELEASED AS 2D354 102-73189-52
BOARD ASSY					
DRAWING FRAME SHOWN ON CIRCUIT BOARD					PWB RELEASED AS 2D354 102-73189-52
BOT_COMPACT					
DRAWING FRAME SHOWN ON CIRCUIT BOARD					
BOARD-ID					
DRAWING FRAME SHOWN ON CIRCUIT BOARD					
Drawn	W. ROBISON	Date	8/2019		
Designed	W. ROBISON	Date	8/2019	TITLE: TACH TERMINATION	
				CAGE	Series
				2D354	102
				Number	Rev
				B 73189	52
				A102_73189_52	
				Date: 12/30/20 8:34 AM	Sheet: 2/2

The University of Iowa
 Department of Physics & Astronomy
 Iowa City, IA, USA

MARK ZERO POINT FOR PICK & PLACE FILE ON PRINTED CIRCUIT BOARD