

PWA RELEASED AS 102-73189-52

ASSEMBLE PER BOM 102_73189_52DigiKey.csv

PICK & PLACE FILE 102_73189_52pck_plc.txt

REFERENCE VIEW, TOP 102_73189_52top.pdf

REF. VIEW, BOTTOM 102_73189_52bot.pdf

PADS ARE TYPICALLY OPTIMIZED FOR HAND SOLDERING. THERE WILL BE ADDITIONAL COPPER EXTENDING BEYOND THE END OF THE DEVICE. THIS ADDITIONAL PAD AREA PROVIDES CONTACT AREA FOR THE SOLDERING IRON TIP



ENCL1

Mfg: HAMMOND
Len: 5.12
Wid: 2.56
Hgt: 1.004

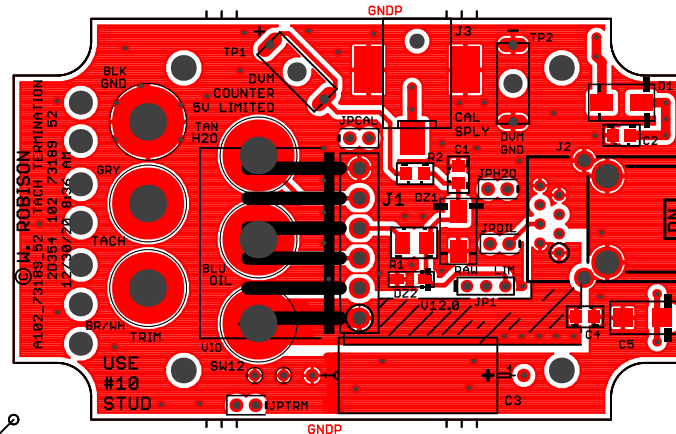
ENCLOSURE

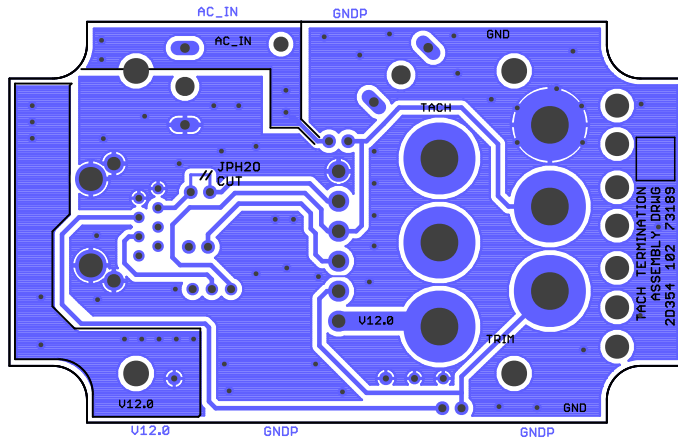
J4

CONNECTOR
REQUIRED
FOR THIS
ASSEMBLY

PCB1

0.485
(11.75)
CLEAR ABOVE
0.062 PCB





BATTERY AREA

TACH TERMINATION
ASSEMBLY - DRAG
2D354 102 73189

PICK&PLACE
ZERO POINT

TOP MARKING INK 105_73189_25.dwg 080.
 BOT COPPER 105_73189_25.dwg 081.

TITLE: TACH TERMINATION		The University of Iowa	
PWA		Department of Physics & Astronomy	
Date: not saved!		Iowa City, IA, USA	
		A102_73189_52	
CAGE	Series	LAYERS	Number
2D354	102	2	73189
		REV:	
		52	