

# TACHOMETER TEMINATION BOARD

INSTALL 6 #10X0.250 BRASS MACHINE SCREWS, THREADS UP  
SOLDER HEADS TO BOTTOM SIDE OF CIRCUIT BOARD  
McMASTER SCREW: 92446A825 NUT: 92092A025

INSTALL SURFACE MOUNT COMPONENTS

INSTALL THRU-HOLE COMPONENTS (CONNECTORS)

DETERMINE JP1 SETTING AND INSTALL JUMPER WIRE  
TACH COMES DIRECT OR THROUGH LIMITER

SELECT DESIRED ANALOG CHANNEL  
NO ACTION REQUIRED FOR WATER TEMP  
OTHER CHANNELS, CUT JPH20 TRACE  
AND INSTALL JPOIL OR JPTRIM

INSTALL JPCAL IS BENCH CALIBRATION IS  
TO BE PERFORMED USING THIS BOARD

INSTALL 6 WIRES FROM MOTOR HARNESS USING #10 BRASS NYLOCK NUTS  
ASSEMBLE TACHOMETER HARNESS FROM ETHERENT PATCH CORD (STRANDED WIRE)

## MISC PARTS

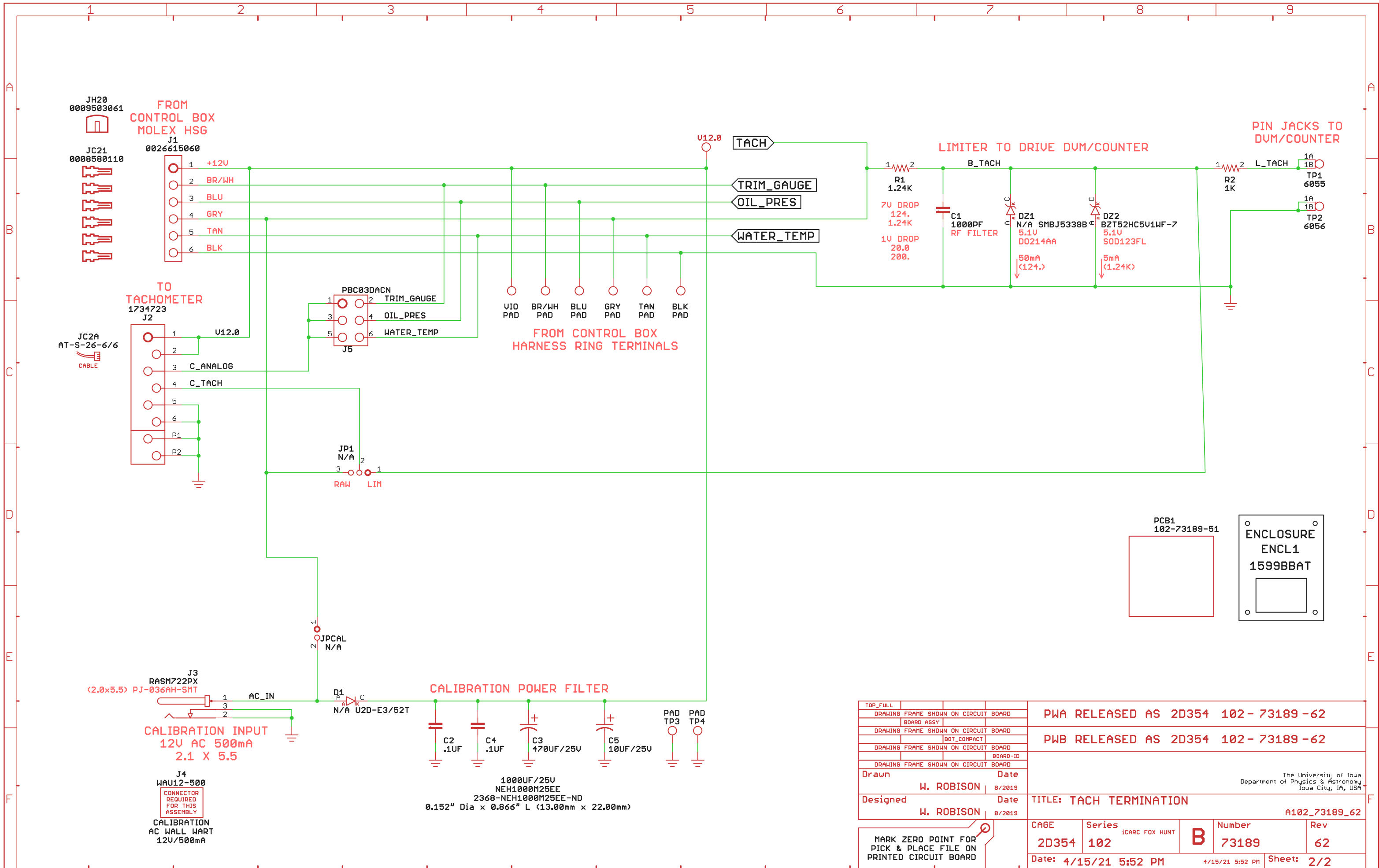
McMASTER 10-32 BRASS SPACER 0.250 OD  
92474A112 3/16"  
92474A113 1/4"  
92474A114 5/16"  
92474A115 3/8"

## -62 REVISION

J2 TO 6-PIN RJ11  
REDUCED HEIGHT CONNECTOR (FITS IN BOX)

Drawn	W. ROBISON	Date	8/2019
Designed	W. ROBISON	Date	8/2019

The University of Iowa Department of Physics & Astronomy Iowa City, IA, USA			
TITLE: TACH TERMINATION			
A102_73189_62			
CAGE	Series	Number	Rev
2D354	102 <small>iCARC FOX HUNT</small>	<b>B</b> 73189	62
Date: 4/15/21 5:52 PM		4/15/21 5:52 PM	Sheet: 1/2



TOP_FULL						PWA RELEASED AS 2D354 102 - 73189 - 62
DRAWING FRAME SHOWN ON CIRCUIT BOARD						PWB RELEASED AS 2D354 102 - 73189 - 62
BOARD ASSY						
DRAWING FRAME SHOWN ON CIRCUIT BOARD						
BOT_COMPACT						
DRAWING FRAME SHOWN ON CIRCUIT BOARD						
BOARD-ID						
DRAWING FRAME SHOWN ON CIRCUIT BOARD						
Drawn	W. ROBISON	Date	8/2019			The University of Iowa Department of Physics & Astronomy Iowa City, IA, USA
Designed	W. ROBISON	Date	8/2019	TITLE: TACH TERMINATION		A102_73189_62
MARK ZERO POINT FOR PICK & PLACE FILE ON PRINTED CIRCUIT BOARD		CAGE	Series	Number	Rev	
		2D354	102	B 73189	62	
		Date: 4/15/21 5:52 PM		4/15/21 5:52 PM	Sheet: 2/2	