

# PWA RELEASED AS 102-73189-62

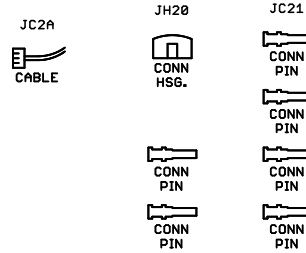
ASSEMBLE PER BOM 102\_73189\_62DigiKey.csv

PICK & PLACE FILE 102\_73189\_62pck\_plc.txt

REFERENCE VIEW, TOP 102\_73189\_62top.pdf

REF. VIEW, BOTTOM 102\_73189\_62bot.pdf

PADS ARE TYPICALLY OPTIMIZED FOR HAND SOLDERING. THERE WILL BE ADDITIONAL COPPER EXTENDING BEYOND THE END OF THE DEVICE. THIS ADDITIONAL PAD AREA PROVIDES CONTACT AREA FOR THE SOLDERING IRON TIP



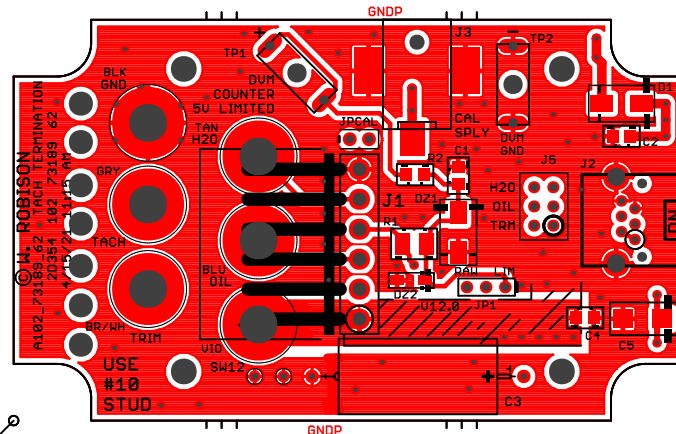
ENCL1
Mfg: HAMMOND Len: 5.12 Wid: 2.56 Hgt: 1.004
ENCLOSURE

J4

CONNECTOR  
REQUIRED  
FOR THIS  
ASSEMBLY

PCB1

0.485  
(11.75)  
CLEAR ABOVE  
0.062 PCB



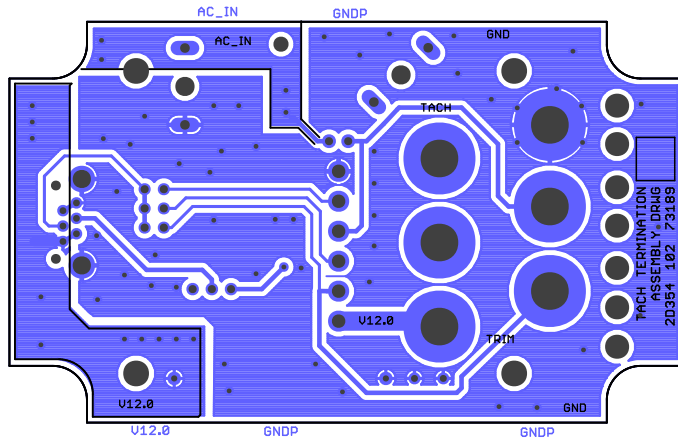
1.04330709

TOP MARKING INK 102\_73189\_62.gto .GTO

TOP COPPER 102 102\_73189\_62.qm01.gtl

PICK&PLACE  
ZERO POINT

Drawn	W. ROBISON	Date	TITLE: TACH TERMINATION				The University of Iowa	
Designed	W. ROBISON	Date	PWA				Department of Physics & Astronomy	
Approval 1		Date	Plot: 4/15/21 11:15 AM Save: not saved!				Iowa City, IA, USA	
			CAGE	Series	iCARC FOX HUNT	LAYERS	Number	REV:
			2D354	102		2	73189	62



PICK&PLACE  
ZERO POINT

TOP COPPER 102 105\_73189\_62.dwg 108

TOP MARKING INK 105\_73189\_62.dwg 080

**TITLE: TACH TERMINATION**

**PWA**

**Date: not saved!**

CAGE	Series	ICARC FOX HUNT	LAYERS	Number	REV:
2D354	102		2	73189	62

The University of Iowa  
Department of Physics & Astronomy  
Iowa City, IA, USA

A102\_73189\_62